

ESTATE OF JAMES VERES

AUCTION

THURSDAY, JUNE 6, 2024 - 11 AM PREVIEW @ 9:30 AM

LOCATION: 2350 PECK RD., BROWN CITY, MI 48416

DIRECTIONS: AUCTION IS LOCATED ON PECK RD. 8 MILES EAST OF M-53 (VAN DYKE RD.) 18 MILES NORTH OF I-69 (EXIT# 168) AND 11 MILES SOUTH OF M-46 (STATE RD.) WATCH FOR AUCTION SIGNS.

ROWLEY AUCTIONS WILL BE CONDUCTING A LIVE ON-SITE AUCTION FOR THE **ESTATE OF JAMES VERES**.

AUCTIONEER'S NOTE: LARGE ASSORTMENT OF AUTO PARTS TO BE SOLD! GO TO WWW.ROWLEYAUCTIONS.COM TO VIEW THE PHOTO GALLERY. MANY MORE PHOTOS TO BE ADDED TO THE WEBSITE A WEEK PRIOR TO THE AUCTION DATE. BARN AND STORAGE AREAS ARE PACKED FULL!!

PARTIAL LISTING

VEHICLES



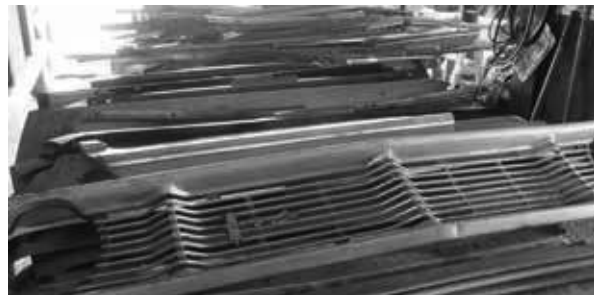
1964 Ford Galaxie w/ 392 Engine, Runs & Drives; 2003 GMC 2500HD Sierra 2WD Dually Flatbed Truck w/ Duramax Diesel Engine; 2008 Ford F-150 XL 2WD Ext. Cab Truck w/ Long Box; 2010 Chevrolet Silverado Z71 4x4 Regular Cab Truck w/ V-6, Short Box.

TRACTOR & MOWERS



Farmall H Narrow Front Tractor; Ford YT14 Garden Tractor w/ Mower Deck; Ford YT 16 Garden Tractor w/ Mower Deck; Husqvarna 2348LS Riding Mower.

AUTOMOTIVE PARTS & RELATED



Variety of N.O.S. Parts; Doors; Hoods; Hubcaps; 1960-66 Ford/Mercury; Chrome Trim; Dash Parts; Head & Tail Lights; Steering Wheels; Intakes; Bumper Parts; Grills; 67 Ford Galaxie Fender Skirts and Others; Radios; Ford Emblems; Flathead Carbs and Others; Vinyl; Rugs/Floor Mats; 1950's, 60's & 70's Manuals; License Plates; Bezels.



COLLECTIBLES



Several DieCast Cars – American Muscle and Others; Coca-Cola Thermometer; Wood Advertising Crates; Bachman The Challenger Train Set; American Flyer Trains; Antique & Vintage Toy Cars; Oil Cans; Bubblegum Machine on Stand; Signs; Old Glass Pop Bottles; Lanterns; Records; Copper Kettle; Porcelain Gas Station Light; Pepsi Wood Crate; Outdoor Patio Stove

Large Variety of Auto Parts From 1940s, 1950s & 1960s, Mustang, Lincoln, Ford and More... Too Numerous To List Everything!

GO TO WWW.ROWLEYAUCTIONS.COM FOR MORE PHOTOS TO VIEW!

Terms & Conditions: Cash, checks, credit cards. 5% Buyer's premium onsite. (3% additional on BP for Credit Card payments). All items are sold "as is, where is" with no warranty, expressed or implied. It is the responsibility of the buyer to determine the condition of the items and bid accordingly. All purchases must be paid in full day of sale. Announcement's day of auction takes precedence over any printed material. Lunch Available.

Auctioneers:
Brian Rowley & Greg Rowden

Rowley

AUCTIONS

**Let Us Do Your Auction
The Professional Way!**

(810) 724-4035

www.rowleyauctions.com

www.bidonline.us

Email: office@rowleyauctions.com

