

AUCTION

SATURDAY,

SEPTEMBER 9, 2023 - 10 AM

PREVIEW @ 8:30 AM

LOCATION: 4480 LAPEER RD., PORT HURON, MI 48060

DIRECTIONS: FROM I-69 & EXIT# 196, WADHAMS RD. INTERSECTION, TURN NORTH ONTO WADHAMS RD., GO 3/4 OF A MILE, TURN EAST ONTO LAPEER RD., GO APPROX. 2 MILES. AUCTION LOCATION WILL BE ON THE NORTH SIDE OF THE ROAD. WATCH FOR AUCTION SIGNS.

LIFELONG COLLECTORS ARE FORCED TO DOWNSIZE DRAMATICALLY AND HAVE COMMISSIONED **ROWLEY AUCTIONS** TO CONDUCT A LIVE ON-SITE AUCTION.

AUCTIONEER'S NOTE: CLEAN & QUALITY AUCTION. MANY UNIQUE AND OUTSTANDING FURNITURE PIECES TO BE SOLD! CHECK WWW.ROWLEYAUCTIONS.COM CLOSER TO AUCTION DATE FOR UPDATED LISTING & PHOTOS, STILL UNPACKING!! THIS IS AN AUCTION YOU DON'T WANT TO MISS. SOMETHING FOR EVERYONE!

PARTIAL LISTING

PETROLEUM/SIGNS/ADVERTISING



Texaco Lube-Ster; Shell Wayne Gas Pump; Large Pennzoil Hard Plastic Sign; Large Shell Hard Plastic Sign; Railroad Track Switcher Complete; Large Traffic Light; Shell Marine Outboard Motor Oil Cans Unopened; Neon Signs; Magnolia Motor Oil Sign- Limited Made; Rexall Thermometer; 1948 Mail Pouch Tobacco Thermometer.

VINTAGE & ANTIQUES

Rare Squirrel Weathervane on Cupola; Clown Waste Container Cover from an Amusement Park; Metal Wagon Wheels; Commercial Sewing Machine; Coffee Grinder;



Wood Mirrors; 1950's Medical Cabinet; Copper Boiler with Rare Insert; Antique Music Cabinet; Pachinko Machine; Embroidery Thread Cabinet; Marble Mantle Surround; Fireplace Screen; Stained Glass Window Panels.

PRIMITIVES

Large Screen/Glass Front Cabinet; Iron Cauldron with Stand; Galvanized Cupola with Glass Ball and Directional; Large Galvanized Box; Copper Lined Garden Wheelbarrow; Primitive Trunks; Windmill Blade Section; Chicken Feeder; Wood Ladders; Whiskey Barrel; Childs Primitive Cupboard; Metal Wash Stand with Bowls and Pitcher; Pickle Crock with Lid; Primitive Door.



FURNITURE

Blue and White Settee; Quarter Sawn Oak Vanity w/ Chair; Dressers; Marble Top Sideboard; Monroe MI

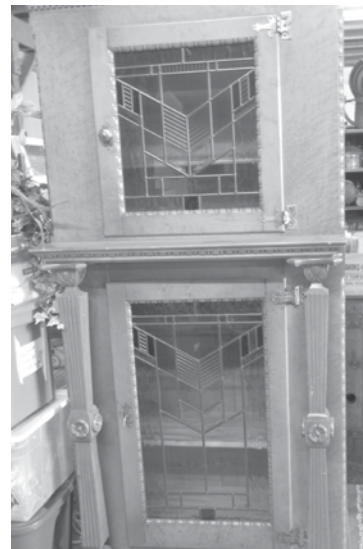


Table from Printing Press; Ornate Leather Seat Carved Chairs; Brass Hall Tree With Mirror; Oak Curio Cabinet; 1950's Metal Kitchen Cabinets, like new!; Mid Century Waterfall Blanket Chest; Maple Drop Leaf End Tables; Early Drugstore Cabinet with All Glass Door Fronts; Bookshelf; Wood Display Wall Cabinet; Butcher Block and Cast Iron Round Tables w/Chairs.

MISCELLANEOUS & MUCH MORE

Borden Milk Crates; Comic Books; Pflueger Fishing Tackle Box; Lenox Ferris Wheel; Marble Sink; Hardware; Watering Cans; Metal Shelves; Military Boots; Walking Sticks; Shabby Chic Chandelier and Sconces; Large Resin Rooster; Large Cherub Fairy.

OUTDOOR

Watering Cans; Porch Swing; Antique Cast Iron Table and Chairs-Two Sets; Planters; Cement Statues.

GO TO WWW.ROWLEYAUCTIONS.COM FOR A LARGE PHOTO GALLERY!

Terms & Conditions: Cash, checks, credit cards. 5% Buyer's premium onsite. (3% additional on BP for Credit Card payments). All items are sold "as is, where is" with no warranty, expressed or implied. It is the responsibility of the buyer to determine the condition of the items and bid accordingly. All purchases must be paid in full day of sale. Announcement's day of auction takes precedence over any printed material. Lunch Available.

Auctioneers:
Brian Rowley & Greg Rowden

Rowley

AUCTIONS

**Let Us Do Your Auction
The Professional Way!**

(810) 724-4035
www.rowleyauctions.com
www.bidonline.us
Email: office@rowleyauctions.com

