

SOULLIERE

AUCTION

PREVIEW
AT 9:30 AM

THURSDAY, NOVEMBER 5, 2020 – 11 AM

LOCATION: 4175 HARRINGTON RD., CROSWELL, MI 48422

Directions: From downtown Croswell, turn west onto Harrington Rd., go 1¼ miles to auction location. Or from M-19 & M-90 intersection, head east on M-90, go approximately 8 miles to 8th Rd., turn north and go 1 mile to Harrington Rd., turn west. Watch for auction signs.

Rowley Auctions has been commissioned by **Kevin Soulliere** to liquidate his personal properties.

Auctioneer's Note: Good off-road parking. Bring your trucks & trailers. Buyer is responsible for loading large pieces of equipment.

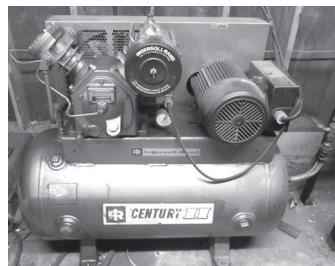
PARTIAL LISTING

Ford 8N Tractor – Good Rubber, 3pt PTO; **Ford 5ft Flail Mower** – 3pt; **4x8 Single Axle Trailer** - 1ft Sides; **3pt Rear Blade**; **4ft Pull-Behind Grader**.

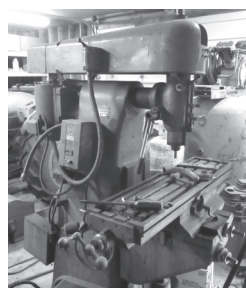


TOOLS & EQUIPMENT

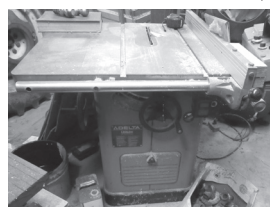
Horizontal Mill; Vertical Mill Mod V2 3ft Bed; Ingersol Rand Century II Type 30 Single Phase Air Compressor w/ Dryer; Ingersol Rand 253 3-Phase Air Compressor; 3 Phase 20hp



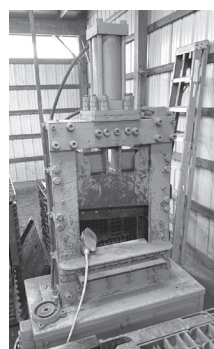
Phase Converter; Handley Lathe 2½ ft Bed – 16x6; Large Metal Shear; HD Shaper; Skat Blast Cabinet w/ Dry Blast System; Onan 20.0 Marine GenSet Diesel Generator (20k Watt); Parts Washer; Portable Sand Blaster Tank w/ Hose; Dayton Hydraulic Pump; Rockwell Delta Band Saw;



Grizzly 7 G-1758 Steel Horizontal Bandsaw; Delta Floor Model Drill Press; Delta Unisaw - Cast Top; Dake Arbor Press #1; Miller Dialarc 250 AC/DC Welder on Cart;



Plasma Cutter; Craftsman Transit w/ Stand; Spectroline FD6445 A Kit; Delta Bench Grinder – 1hp; Alesta Nap-Gard Powder Coating – Several Boxes; Torch & Gauges w/ Tanks & Cart; Grizzly 2ft Pipe Bender; Pro-Series Battery Charger 2/15/40 Amp; Makita Grinder; Craftsman ¾ Drive Ratchet

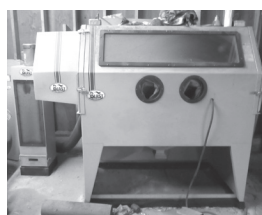


& Socket Set; Skilsaw; Power Tools; Air Tools; Milwaukee Sawzall; Table Saw; MSW-41 Portable Spot Welding Machine w/ Extra Tips; Delta Chop Saw; Electric Motors; DeWalt



Cordless Tools; Steel Welding Table; (2) Wisconsin Engines; Victor Torches – 2ft & 4ft; Torches w/ Cart; Remington SS Kerosene Heater; Salamander Heaters; Reddy Heater 70; Hydraulic Hoist; Large Hoist; Railroad Jack; Electric Impact; Air Impact; Large Craftsman Tool Box; Craftsman Tools Boxes – Several; Large Work

Bench; Craftsman Wrenches – Lots; Ridgid Pipe Wrenches; Large Blower; Steel Cabinets; (5) 3x8 HD Steel Shelving w/ Multiple Shelves; Wood



Small-Drawer Organizer – Loaded w/ Hardware; Wood & Steel Vices; Pipe Vice; Drills; Drill Sharpener; Napa Bottle Charger; Heavy Duty Car Ramps; Large Dolly; Shop Cart; Welding Shield; Multiple Sizes & Types



of Casters; Large Shop Fan; Coleman Lantern; Work Lights; Jacks; Steel Saw Horses; Clamps; Porter Cable Belt Sander; Chain Saws; Polisher; Steel Drawer Organizers w/ Nuts & Bolts – Nice; Log Chains; Garden Tools; Lots of Hand Tools; Lots of Electrical Supplies; Files; Steel Stamp Set; Hammers – All Kinds; Deep Well Sockets.

ANTIQUES & MISC.

U.S. Stove Co. Hot Blast Wood Stove; Large Firehouse Siren; Platform Farm Scale; Anvil w/ Stand; Steel Farm Wheels; Bay City Shovels Inc. 20 Cast Iron Plate; Cast Iron RR Signs – Nice; RR Signal Light; Various Antique Tools.

MUCH MORE DAY OF AUCTION!

VISIT WWW.ROWLEYAUCTIONS.COM FOR MORE PHOTOS!

Terms & Conditions: Cash, Personal check w/ current ID, Major credit cards. 5% buyer's fee. Everything is sold "AS-IS" with no warranty or guarantee expressed or implied. Purchases must be paid in full day of auction. It is the responsibility of the buyer to determine the condition of the items and bid accordingly. Announcements day of auction take precedence over any printed material. Lunch Available.

Auctioneers:
Brian Rowley & Greg Rowden

Rowley
AUCTIONS

Let Us Do Your Auction The Professional Way!

(810) 724-4035

www.rowleyauctions.com

www.bidonline.us

Email: office@rowleyauctions.com

